

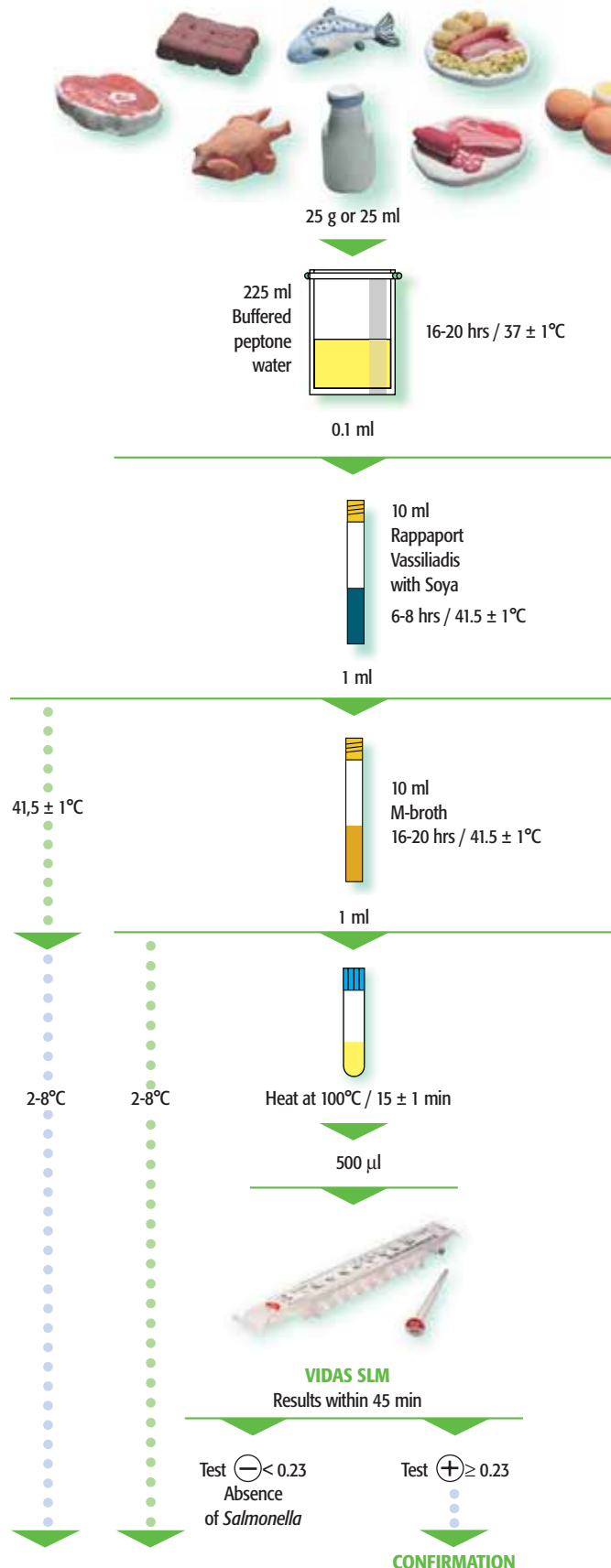
# VIDAS® SLM

single selective enrichment

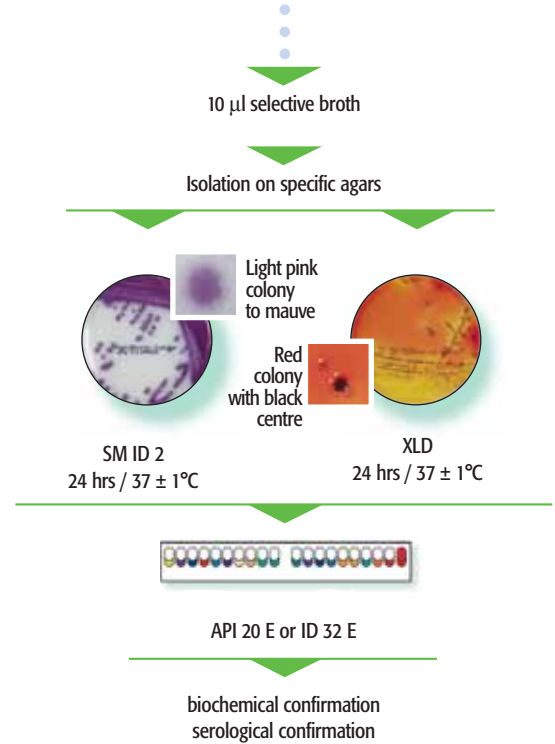
## Detection and confirmation of Salmonella in human and animal food products

Protocol validated by AFNOR BIO 12/10-09/02

### 1 detection using VIDAS SLM



### 2 confirmation with reference method



#### Salmonella range

42043	Buffered peptone water	6 x 225 ml
42629	Buffered peptone water	3 x 3 l
42110	Rappaport Vassiliadis Soya Broth	20 tubes 10 ml
42077	M - broth	20 tubes 10 ml
43621	SM ID2 - agar	20 plates
43563	XLD - agar	20 plates
43564		100 plates
43111	Hektoen - agar	20 plates
20100	API 20 E	25 strips
32400	ID 32 E	25 strips
30702	VIDAS Salmonella (SLM)	60 tests

For further details, consult the product package insert.

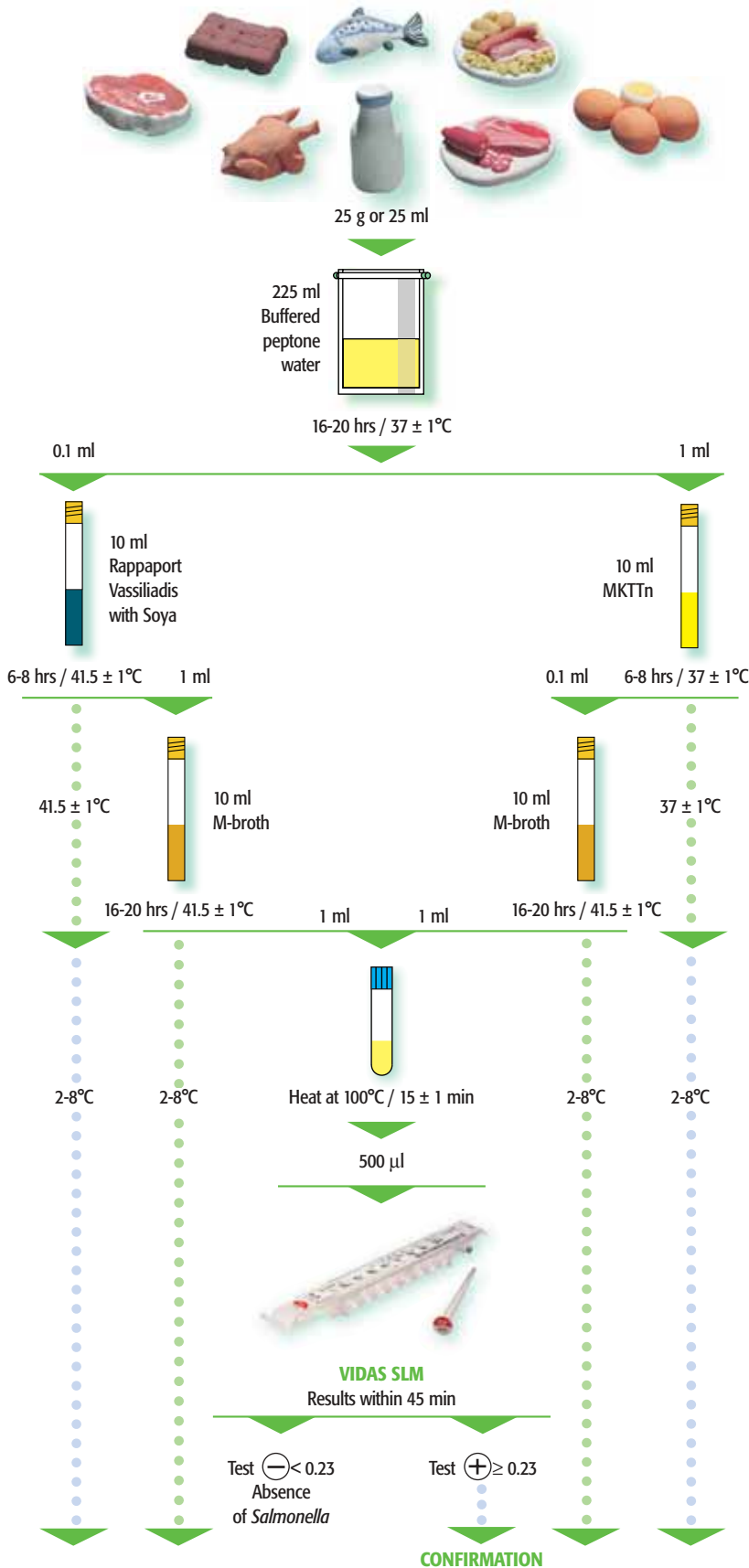
# VIDAS® SLM

dual selective enrichment

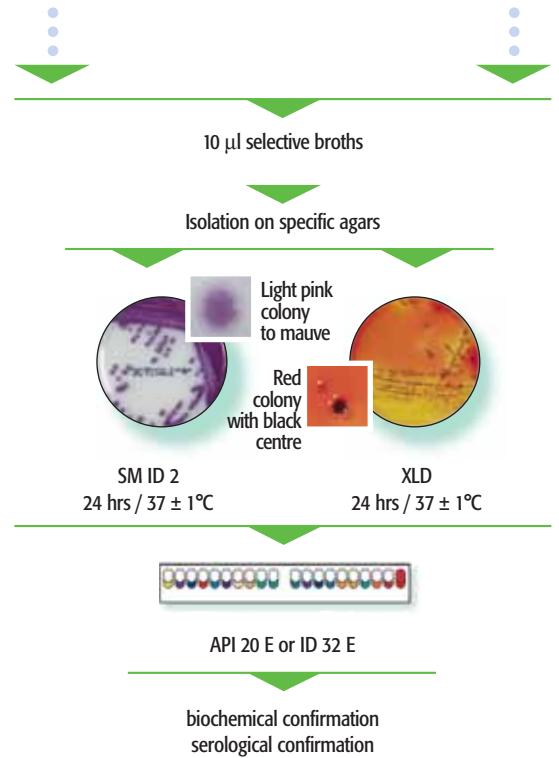
## Detection and confirmation of Salmonella in human and animal food products

Protocol validated by AFNOR BIO 12/01-04/94

### 1 detection using VIDAS SLM



### 2 confirmation with reference method



#### Salmonella range

42043	Buffered peptone water	6 x 225 ml
42629	Buffered peptone water	3 x 3 l
42110	Rappaport Vassiliadis Soya Broth	20 tubes 10 ml
42114	MKTn Broth	20 tubes 10 ml
42077	M - broth	20 tubes 10 ml
43621	SM ID2 - agar	20 plates
43563	XLD - agar	20 plates
43564		100 plates
43111	Hektoen - agar	20 plates
20100	API 20 E	25 strips
32400	ID 32 E	25 strips
30702	VIDAS Salmonella (SLM)	60 tests

For further details, consult the product package insert.

bioMérieux sa  
69280 Marcy l'Etoile • France  
Tel. 33 (0)4 78 87 20 00  
Fax 33 (0)4 78 87 20 90  
[www.biomerieux.com](http://www.biomerieux.com)



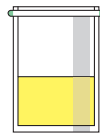
### 1 Detection using VIDAS SLM

#### VIDAS NEXT DAY

All food products except raw milk



≤ 25 g or 25 ml



Buffered Peptone Water  
16-20 hrs at 37°C +/-1°C



800 µl

VIDAS ICS 2 40 minutes

Recover the solution of immuno-concentrated *Salmonella* from the first well of the VIDAS ICS 2 strip



ICS broth pre-warmed 30 minutes at 41.5°C +/-1°C  
5-6 hrs at 41.5°C +/-1°C

1-2 ml



15 minutes at 100°C

500 µl

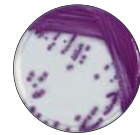


VIDAS SLM 45 minutes  
Next day result

2-8°C

### 2 Confirmation

Isolate the non heated ICS broth on a selective agar



SM ID 2  
24 hrs at 37°C +/-1°C



API® 20 E or ID 32 E

isolate on a non-selective agar to check the purity of the inoculum

#### Salmonella range

42043	Buffered peptone water	6 x 225 ml
42629	Buffered peptone water	3 x 3 l
42610	ICS broth	100 tubes
43563	XLD-agar	20 plates
43564	XLD-agar	100 plates
43621	SM ID 2 agar	20 plates
43629	SM ID 2 agar	100 plates
43701	XLT4 agar	20 plates
30702	VIDAS Salmonella (SLM)	60 tests
30708	VIDAS ICS 2	60 tests
20100	API 20 E	25 strips
32400	ID 32 E	25 strips

For further details, consult the product package insert.

bioMérieux S.A.  
69280 Marcy l'Etoile  
France  
Tel. 33 (0)4 78 87 20 00  
Fax 33 (0)4 78 87 20 90

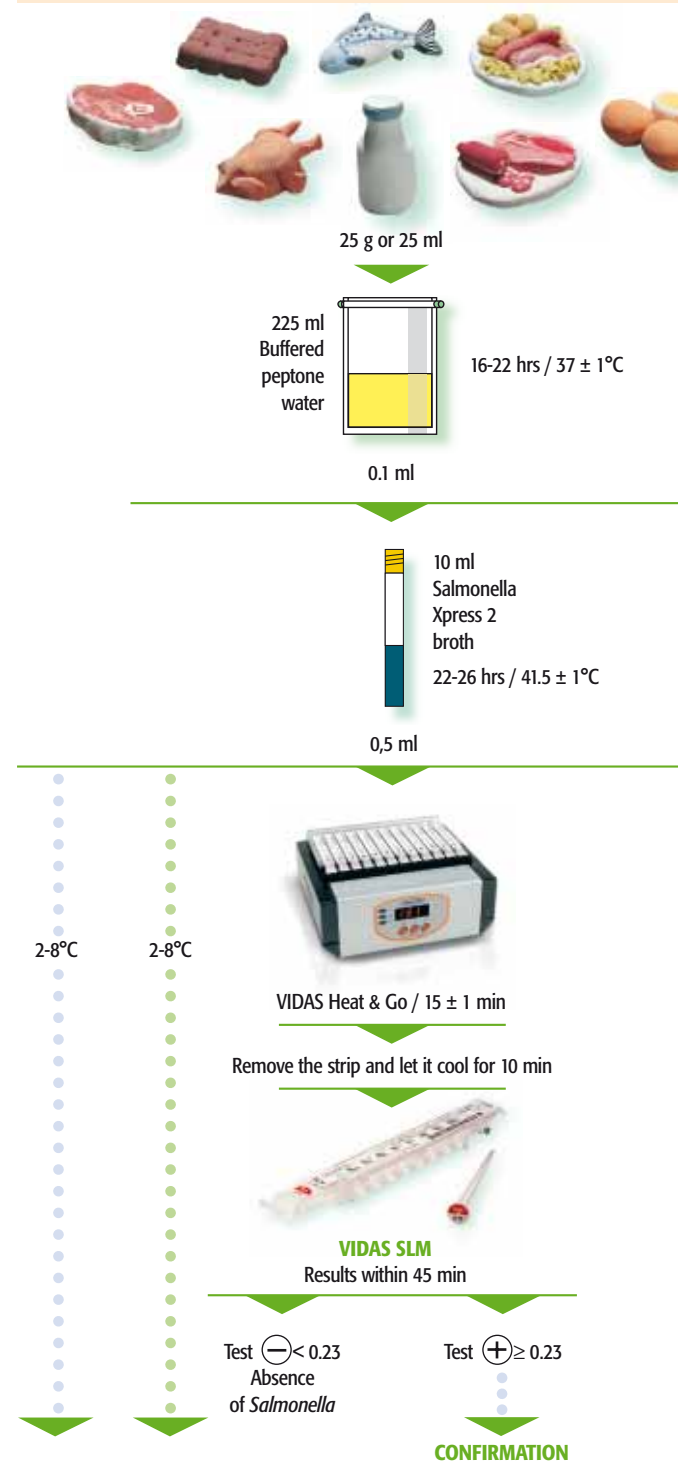
[www.biomerieux.com](http://www.biomerieux.com)

# VIDAS® Easy SLM

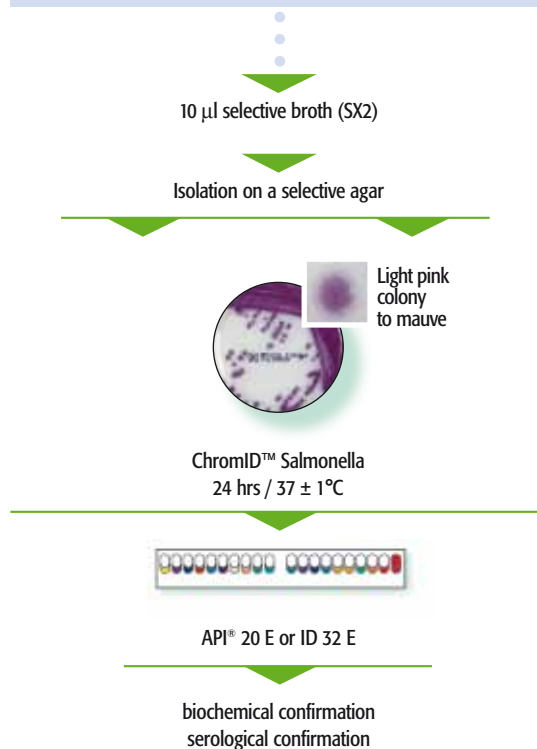
## Detection and confirmation of *Salmonella* in food products, animal feed and environment

General protocol, validated ISO 16140 by AFNOR, N°BIO 12/16-09/05

### 1 detection using VIDAS Easy SLM



### 2 confirmation with reference method



#### Salmonella range

42043	Buffered peptone water	6 x 225 ml
42629	Buffered peptone water	3 x 3 l
42729	Minibags Buffered peptone water	10 x 225 ml
42121	Salmonella Xpress 2 broth	20 tubes 10 ml
43621	ChromID Salmonella	20 plates
43563	XLD - agar	20 plates
43564	XLD - agar	100 plates
43111	Hektoen - agar	20 plates
20100	API 20 E	25 strips
32400	ID 32 E	25 strips
30702	VIDAS Salmonella (SLM)	60 tests
93554	VIDAS Heat and Go*	110 Volts
93555	VIDAS Heat and Go*	230 Volts
93556	VIDAS Heat and Go*	100 Volts

For further details, consult the product package insert.

\* Please contact your local representative.

bioMérieux S.A.  
69280 Marcy l'Etoile  
France  
Tel. : 33 (0)4 78 87 20 00  
Fax : 33 (0)4 78 87 20 90

[www.biomerieux-industry.com](http://www.biomerieux-industry.com)

